

AnyLogic Model Development Environment

This Presentation is a part
of AnyLogic Standard
Training Program



AnyLogic GUI

Menu and Toolbars. Shortcuts to Most Commands

Project view.
Easy
Navigation

Double
click

Graphical
Editor
Diagram

Click

Palette view.
Model items
grouped in
stencils

Properties of
the currently
selected item

Problems view. Displays and helps to locate Errors



Menu and Toolbars

- Shortcuts to most commands
- Automatically adjust to current view

Standard (New Model, Open Model, Save Model, Save All Models)



Edit (Undo, Redo, Cut, Copy, Paste, Delete)



Build (Build Model, Build All, Debug, Run)



Draw (Zoom to, Zoom In, Zoom, Zoom Out, Show/Hide Grid, ...)



Model Structure – All Elements as a Tree

Double-Click to open editor and/or properties of an element

Models with unsaved changes are marked with asterisks

Right-Click for context menu

Use **Copy/Cut** and **Paste** to copy within the tree

All model items are organized hierarchically

Project

- Bank
- Bass Diffusion*
 - Main
 - Simulation: Main
 - ContactRateVariation: Main
- Bass Diffusion Agent Based
 - Main
 - Person
 - Simulation: Main
- Pendulum*
 - Main
 - Parameters
 - alpha
 - omega
 - Dynamic Variables
 - Analysis Data
 - Presentation
 - group
 - line
 - oval
 - slider
 - button
 - plot
 - Simulation: Main

Context Menu:

- New
- Open with
- Open...
- Cut
- Copy
- Paste
- Delete
- Refresh
- Refactor
- Run
- Debug

Main

PotentialAdoptersDS

AdoptersDS

PotentialAdopters

AdoptionRate

Adopters

AdEffectiveness

AdoptionFromAd

AdoptionFromWOM

TotalPopulation

ContactRate

AdoptionFraction

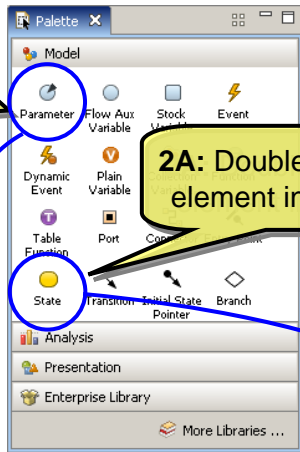
AdoptionFromAdDS

AdoptionFromWOMDS

Adding Palette Items on Diagram

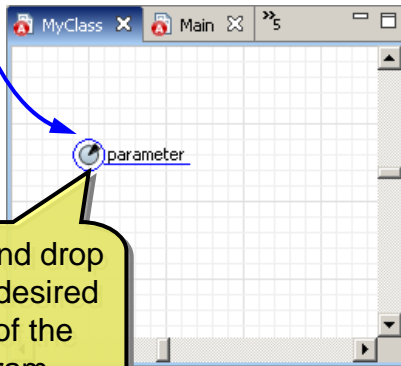
1. Common way

1A: Drag the element from Palette...



2A: Double-click the element in Palette

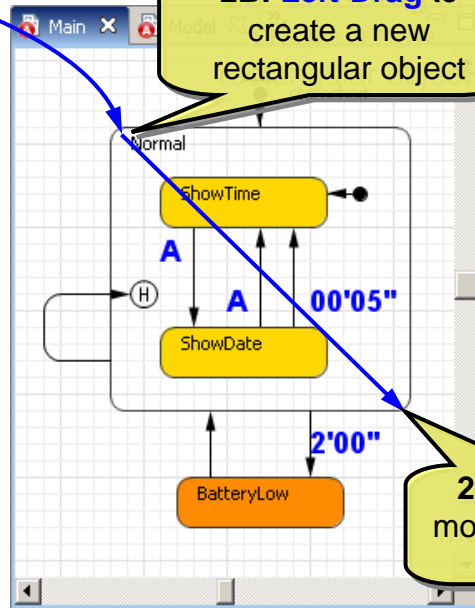
1B: ... and drop it in the desired place of the diagram



2. Rectangular objects

(Rectangle, Rounded Rectangle, Oval, State)

2B: Left-Drag to create a new rectangular object

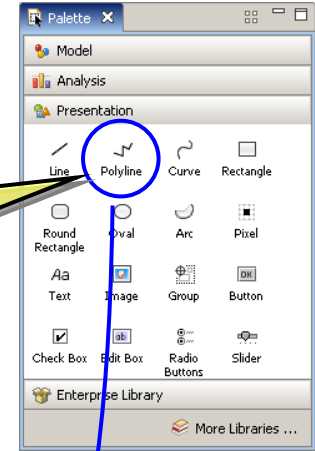


2C: Release mouse button to finish

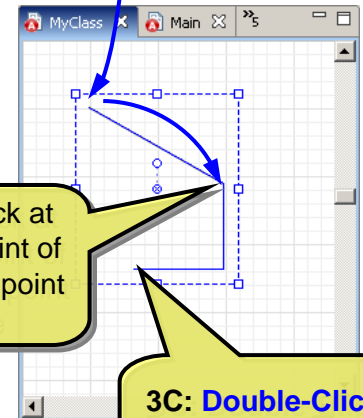
3. Multipoint objects

(Polyline, Curve, Transition, Connector)

3A: Double-click the element in Palette



3B: Click at each point of the multipoint line



3C: Double-Click to finish multipoint object creation

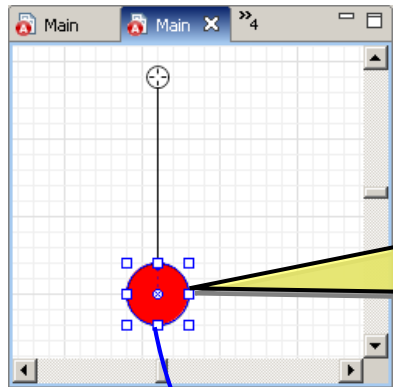


Graphical Editor – Selecting & Copying

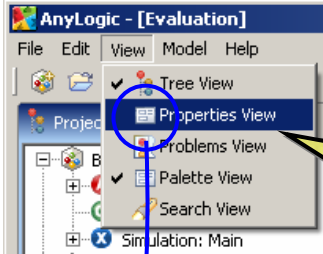
The image shows a graphical editor window titled "Controlled by a Statechart". The window contains a statechart diagram with several objects: "ShowTime", "ShowDate", and "BatteryLow". A dashed blue rectangle is drawn around the "ShowTime" and "ShowDate" objects, indicating they are selected. A blue diagonal line is drawn across the diagram, and a green arrow points to the "Replace Battery..." label. The interface includes a toolbar at the top with a zoom control set to 100% and a window management icon. Callouts provide instructions for various actions:

- Switch between editor windows**: Points to the window management icon in the toolbar.
- Zoom control**: Points to the 100% zoom setting in the toolbar.
- Maximize/restore graphical editors**: Points to the maximize/restore icon in the window title bar.
- Shift+Click** object to add it to the selection: Points to a small square handle on the statechart object.
- Ctrl+Drag** to copy the selected objects in the same window: Points to the dashed selection rectangle.
- Right-Drag** to move the canvas in the window: Points to the four-way arrow cursor at the bottom left of the canvas.
- Drag rectangle** to select multiple objects: Points to the dashed selection rectangle.

Properties View

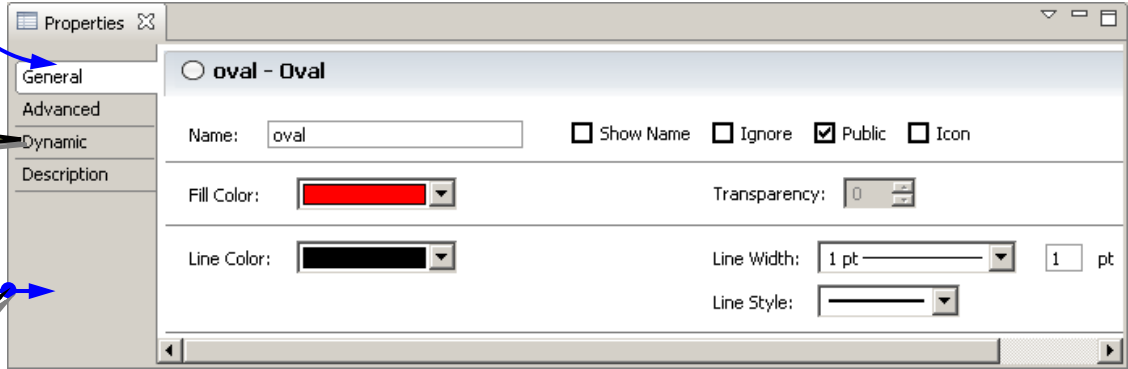


Click or Double-Click object to display its properties



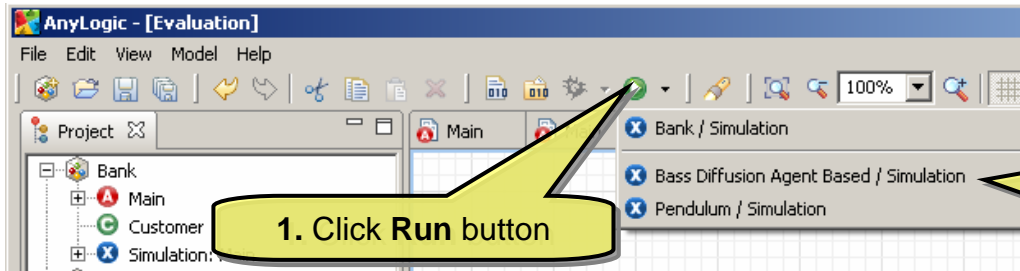
Open Properties view

Click on tabs to switch property pages



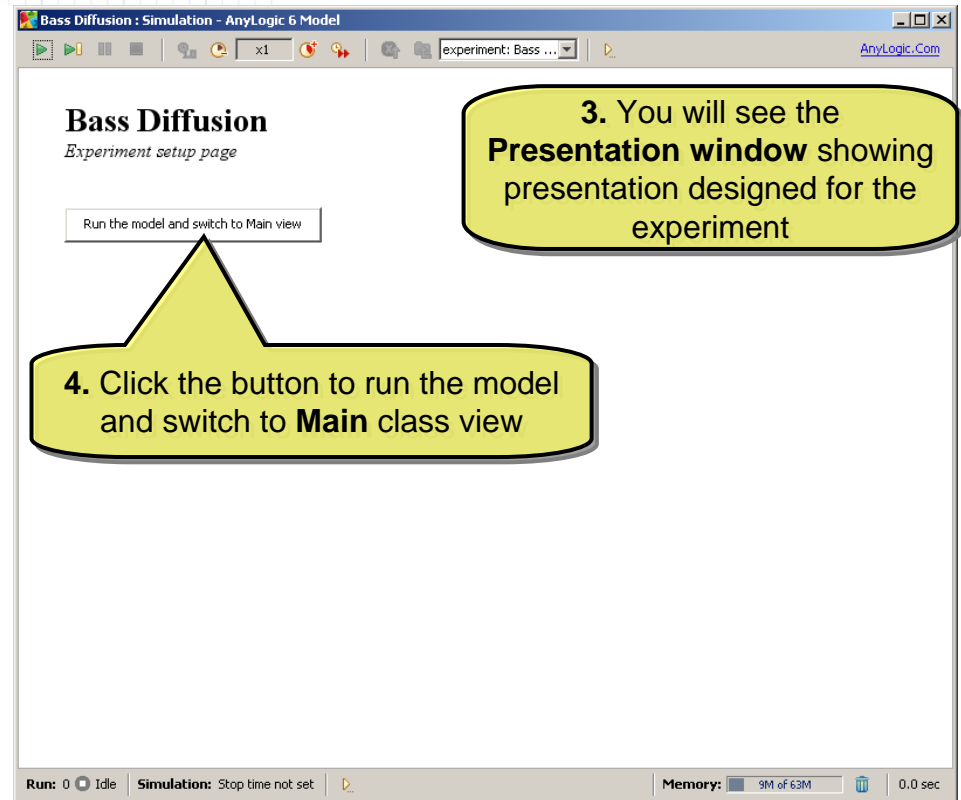
Drag Border to resize properties

Running the Model



1. Click **Run** button

2. Choose the experiment to run



3. You will see the **Presentation window** showing presentation designed for the experiment

4. Click the button to run the model and switch to **Main** class view



Presentation Window

Animated flowchart

Statechart

Animation

Control

Statistics chart

Inspect for model element

Right-Drag to move the canvas in the window

timeInSystemDistr
Time in system distribution

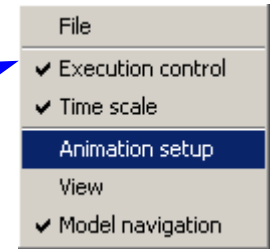
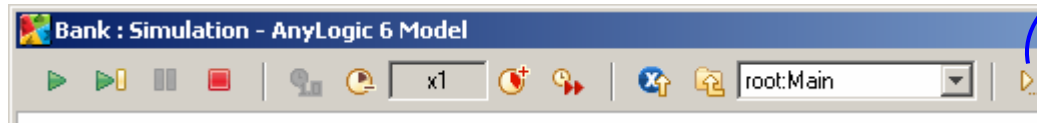
From	To	PDF
0.8	1.52	21,719
1.52	2.24	4,729
2.24	2.96	1,426
2.96	3.68	1,334
3.68	4.4	1,880
4.4	5.12	2,669
5.12	5.84	3,586

ATM utilization: 0.341

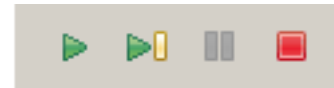
Run: 0 Paused Simulation: Stop time not set Memory: 9M of 63M

Major Toolbar Commands

- Toolbars and status bar can be customized

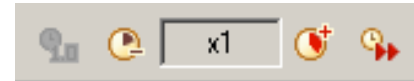


- Execution control



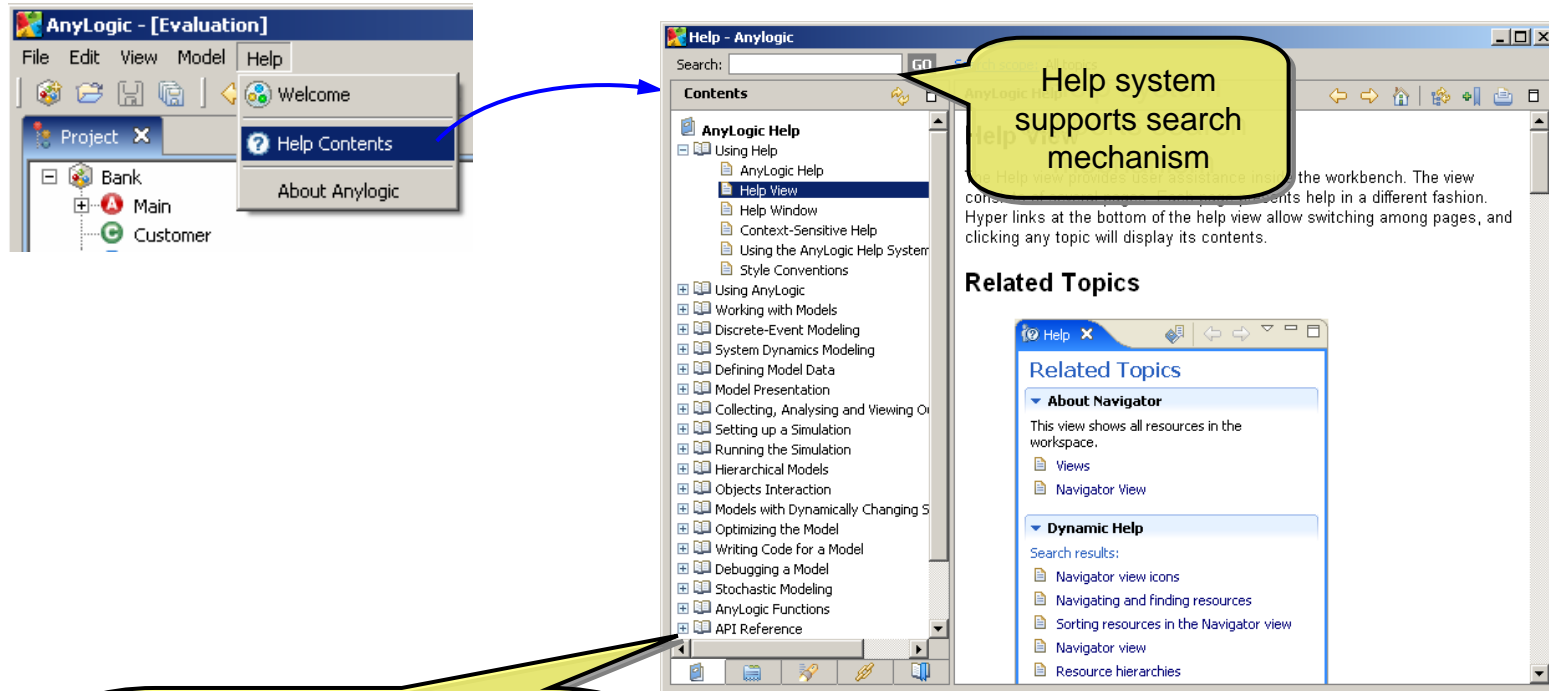
Run from the current state: _____ ↑
 Make a step: _____ ↑
 Pause the running model: _____ ↑
 Terminate execution: _____ ↑

- Time scale



Real Time mode only {
 Set real time mode at default scale: _____ ↑
 Decrease execution twice: _____ ↑
 Select execution speed factor: _____ ↑
 Increase execution speed twice: _____ ↑
 Toggle Real/Virtual time modes: _____ ↑

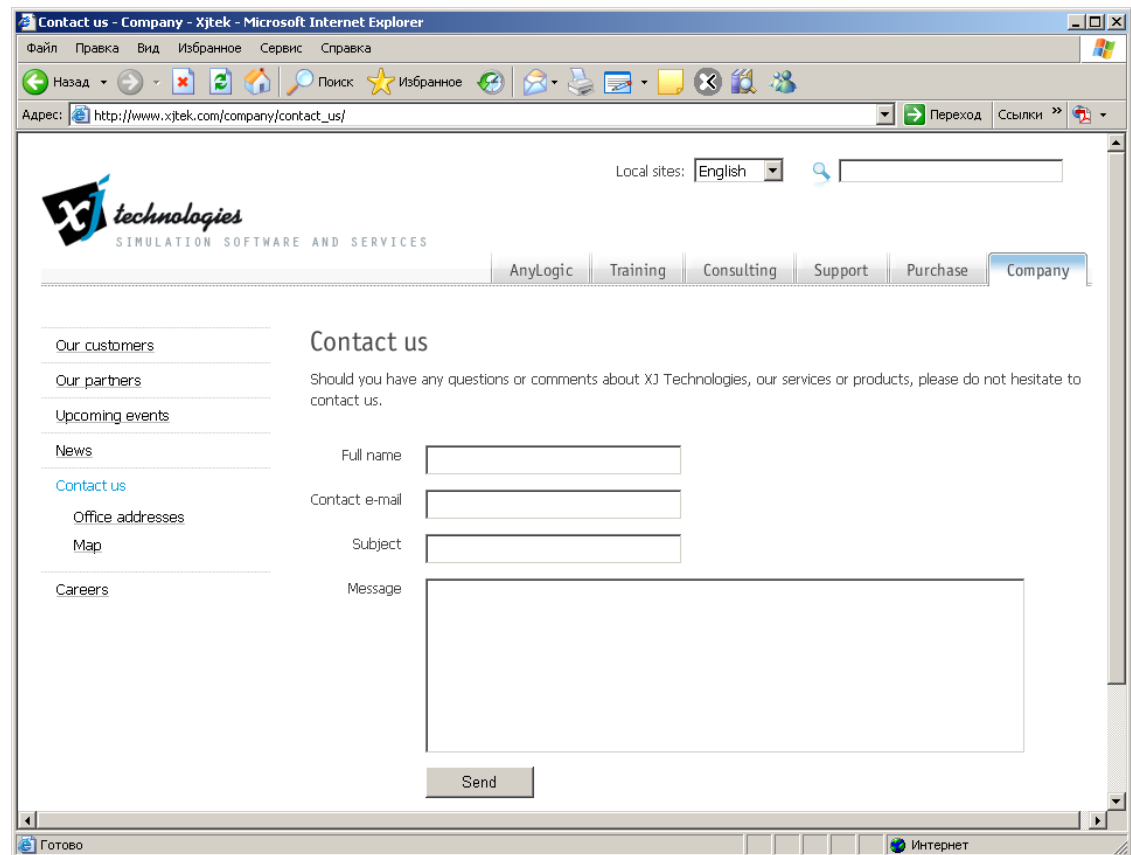
AnyLogic Help



AnyLogic Help contains API Reference with Java Documentation on all AnyLogic simulation engine classes and functions open to the user

AnyLogic Support

- Email us at support@xjtek.com, or
- Use online form at www.xjtek.com/company/contact_us



The screenshot shows a web browser window titled "Contact us - Company - Xjtek - Microsoft Internet Explorer". The address bar displays "http://www.xjtek.com/company/contact_us/". The page features the XJ Technologies logo and navigation tabs for "AnyLogic", "Training", "Consulting", "Support", "Purchase", and "Company". A sidebar on the left lists links such as "Our customers", "Our partners", "Upcoming events", "News", "Contact us", "Office addresses", "Map", and "Careers". The main content area is titled "Contact us" and includes a message: "Should you have any questions or comments about XJ Technologies, our services or products, please do not hesitate to contact us." Below this is a form with fields for "Full name", "Contact e-mail", "Subject", and "Message", followed by a "Send" button.